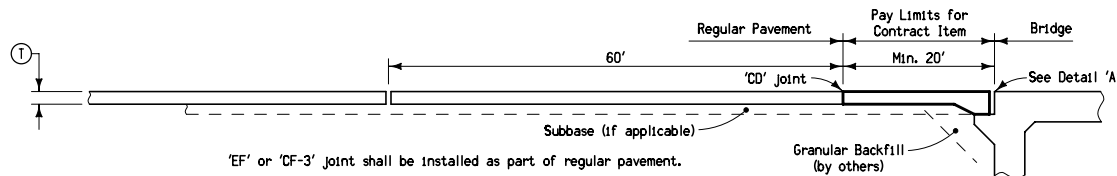


TYPICAL BRIDGE APPROACH PLAN

Concrete used for the bridge approach section shall be the same as that used for remainder of project pavement.

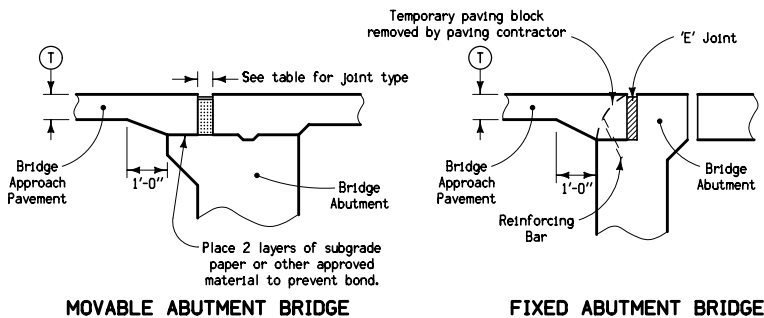
For joint details, see PV-1.

Quantity for 20' long approach section for 24' pavement is 53.33 sq. yds. of "Bridge Approach."



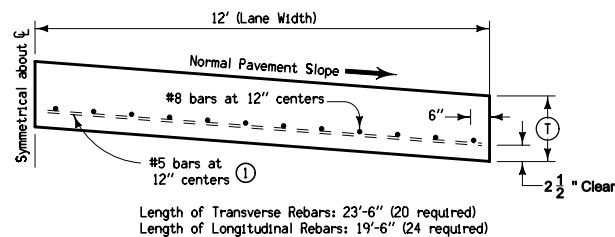
SECTION A-A

JOINT TYPE FOR MOVABLE ABUTMENT BRIDGES		
Joint	Concrete Beam Maximum Bridge Length	Steel Girder Maximum Bridge Length
CF-1	370'	250'
CF-2	465'	320'
CF-3	575'	400'



DETAIL 'A'

'T' is same thickness as is required for remainder of project pavement.



TYPICAL HALF SECTION B

① If bridge is skewed, place additional #5 bar parallel to skewed face.

Possible Contract Items:
 Bridge Approach, RK-18
 Standard or Slip-Form PCC Pavement

Possible Tabulation:
 112-6

 STANDARD ROAD PLAN	REVISION 9 04-20-10
	RK-18
	SHEET 1 of 1

REVISIONS: Updated references to renamed standards. Revised reinforcement.

Deanna Maifeld
 APPROVED BY DESIGN METHODS ENGINEER

**BRIDGE APPROACH DETAILS
 (SECONDARY ROADS)**