

PMG Quad Bay Battery Pack Battery Installation Instructions



The PMG Quad Bay Battery Pack provides a weatherproof, self-contained power source for all three sizes of PMG: 12", 15", and 18" models. 1 to 4 batteries can be installed, depending on configuration and power requirements.

Battery with solar

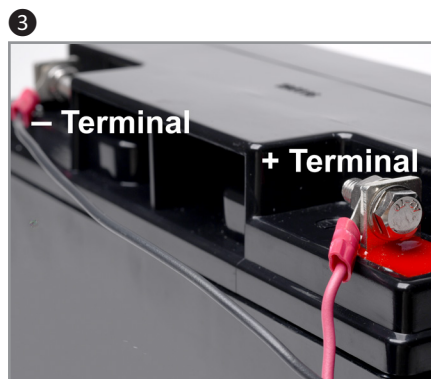
The PMG Quad Bay Battery Pack can be used in conjunction with the Stalker solar panel where the solar panel recharges the batteries.

Battery only

The Quad Bay Battery Pack can also function as a battery-only power source where the user periodically exchanges charged batteries for the discharged ones.

Preparing the Battery for Installation

1. The battery installation kit is supplied with a self-adhesive strip, a wiring harness to connect with the PMG, and a self-adhesive cable tie base and zip tie for the wiring harness. **2.** The adhesive strip is applied to the battery (which should not exceed 3" wide x 7" long x 6.5" tall) to form a handle for sliding the battery in and out of the battery bays. **3.** The wiring harness' red wire is connected to the battery's positive (+) terminal and the black wire is connected to the negative (-) terminal. **4.** Adhere the cable tie base on the battery near the positive terminal and use the zip tie to *tightly* secure the wiring harness to the battery.



STALKER[®]

Power to Enforce.

StalkerRadAr.com

PMG Quad Bay Battery Pack Battery Installation Instructions

Changing Batteries

Changing the batteries is most easily accomplished when the PMG is mounted on a pole.

1. Open PMG Quad Bay Battery Pack left or right access door with the supplied key.

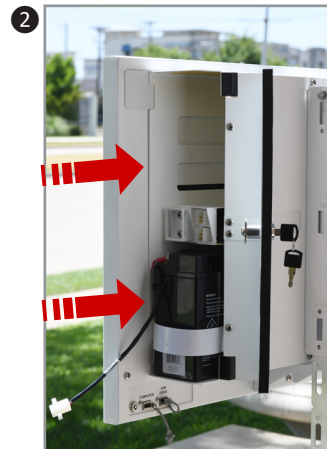
Check for water.

2. Slide a battery into any one of the four open bays. Two are available on each side. 1 to 4 batteries may be used and placed into any available bay.

Note: When removing batteries, grasp the strap. Avoid pulling with the wiring harness.

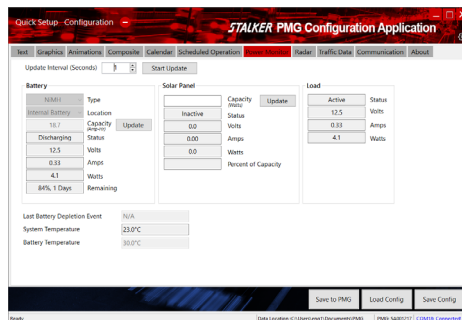
3. Connect the battery harness to the PMG through the Molex connector.

4. Install another battery if desired. Close and lock the battery bay door.



Monitor battery status and days remaining

If installing batteries for the first time or changing battery type, complete configuration through the *PMG Configuration Application* > *Power Monitor* tab.



For additional information, refer to the PMG Operator Manual, 011-0269-00.

StalkerRadar.com

STALKER®

Power to Enforce.

applied concepts, inc.
855 East Collins Boulevard ■ Richardson, Texas 75081
972.398.3780 ■ Fax 972.398.3781



006-0619-00 Rev A

800-STALKER