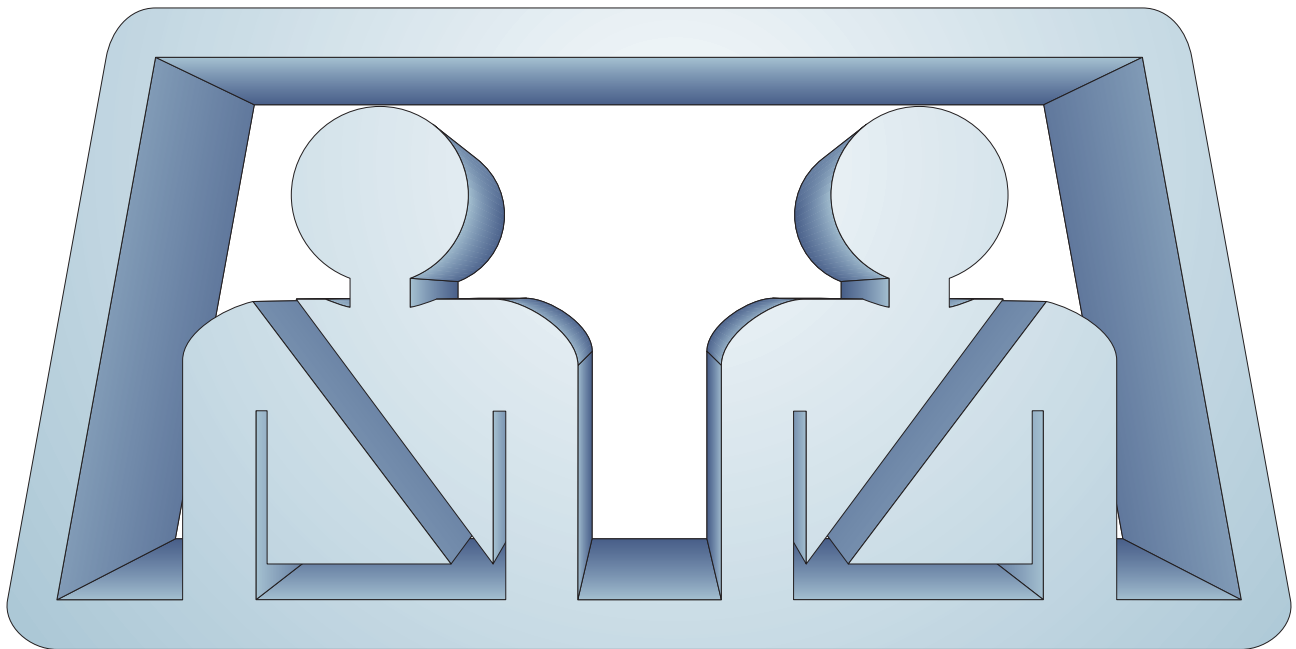


2011

Seat Belt

Usage Survey



**Site surveys conducted by officers of the
Iowa State Patrol, Department of Public Safety**

**Statistics compiled and survey written by the
Office of Driver Services, Iowa Department of Transportation**

2011 Seat Belt Usage Survey

List of Charts

1. Seat Belt Usage Survey—Summary	2
2. Restraint Usage by Year and Road System	2
3. Usage Percent by Year—All Road Systems.....	3
4. Usage Percent by Year—Municipal Road System.....	3
5. Usage Percent by Year—Primary Road System	4
6. Usage Percent by Year—Secondary Road System	4
7. Usage Percent by Year—Interstate System.....	5
8. April Survey by Road System	6
9. July Survey by Road System	6
10. April/July Change.....	6
11. Usage by Road Systems and Population	7
12. Usage by Population and Road System	7
13. Usage by Area of State and Road System	7
14. Usage by Day of Week and Road System	8
15. Usage by Time of Day and Road System.....	8
16. Site Selection by County	9
17. Site Selection by Area of State	10
18. Site Selection by Population Category	10
19. Statewide Vehicle Miles of Travel	10
20. April Seat Belt Survey Sites	11
21. July Seat Belt Survey Sites.....	12

2011 Seat Belt Usage Survey

Chart 1

2011 Seat Belt Usage Survey--Summary

Road System	April Usage			July Usage			Change
	Observed	Used	Percentage	Observed	Used	Percentage	
Statewide Total	12,811	11,830	92.69%	11,563	10,698	93.45%	0.77%
Municipal	5,200	4,774	91.81%	4,810	4,344	90.31%	-1.50%
Primary	4,620	4,246	91.90%	4,424	4,145	93.69%	1.79%
Secondary	858	801	93.36%	875	836	95.54%	2.19%
Interstate	2,133	2,009	94.19%	1,454	1,373	94.43%	0.24%

Estimated statewide total April survey usage weighted by vehicles miles of travel and 95% confidence intervals for the estimated variance are +/- 0.14%

Estimated statewide total July survey usage weighted by vehicles miles of travel and 95% confidence intervals for the estimated variance are +/- 0.13%

Chart 2

Restraint Usage by Year and Road System

Survey	Statewide	Municipal	Primary	Secondary	Interstate
06/86	27%	20%	27%	24%	43%
09/86	46%	34%	48%	42%	62%
04/87	63%	54%	65%	64%	69%
09/87	56%	48%	56%	55%	67%
09/88	55%	46%	55%	52%	69%
09/89	59%	49%	56%	61%	72%
09/90	61%	49%	60%	61%	76%
09/91	68%	64%	64%	64%	79%
09/92	71%	62%	69%	71%	83%
09/93	73%	59%	73%	71%	80%
09/94	73%	63%	72%	72%	82%
09/95	75%	65%	75%	76%	85%
09/96	75%	69%	74%	71%	85%
11/97	75%	69%	74%	71%	85%
10/98	77%	70%	76%	79%	84%
10/99	78%	72%	78%	80%	84%
10/00	78%	73%	79%	77%	82%
10/01	81%	76%	83%	83%	81%
09/02	82%	79%	83%	87%	81%
03/03	82%	78%	86%	81%	82%
07/03	86%	82%	88%	83%	90%
04/04	84%	79%	84%	88%	84%
07/04	86%	84%	87%	86%	88%
04/05	85%	78%	87%	89%	85%
07/05	86%	81%	86%	87%	88%
04/06	89%	87%	89%	90%	90%
07/06	89%	84%	89%	90%	92%
07/07	92%	91%	92%	92%	94%
04/08	91%	89%	90%	92%	92%
07/08	93%	91%	93%	95%	93%
04/09	93%	91%	92%	94%	93%
07/09	93%	91%	93%	94%	94%
04/10	92%	89%	91%	95%	94%
07/10	93%	92%	93%	93%	94%
04/11	93%	92%	92%	93%	94%
07/11	93%	90%	94%	96%	94%

2011 Seat Belt Usage Survey

Chart 3
Seat Belt Usage Percent by Year—All Road Systems

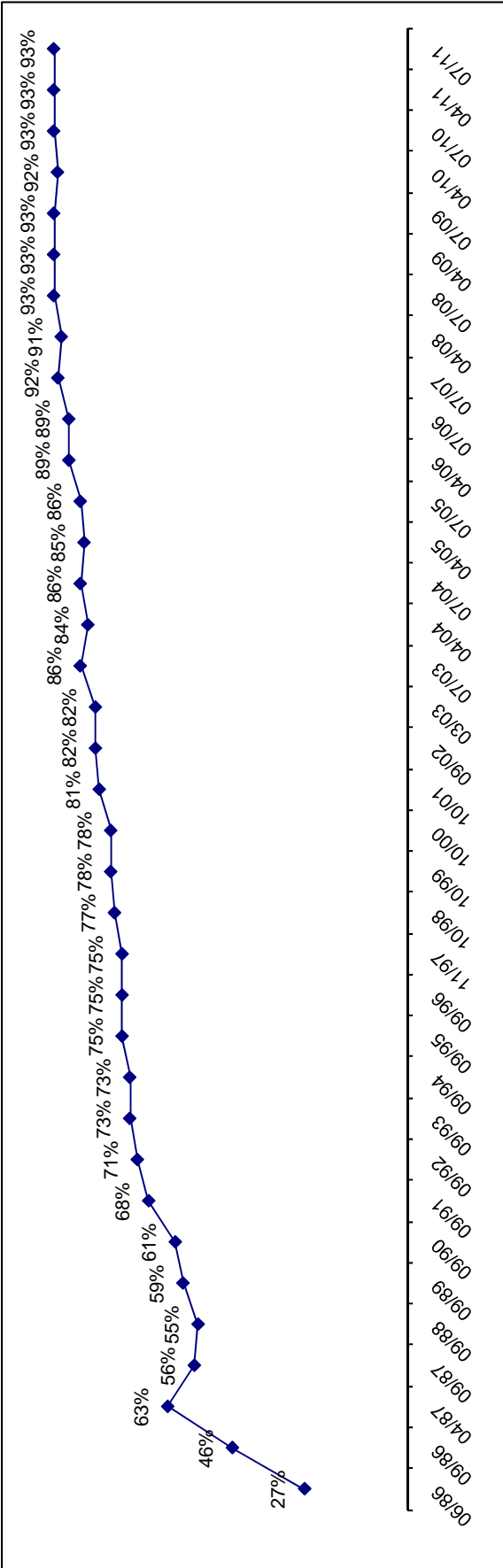
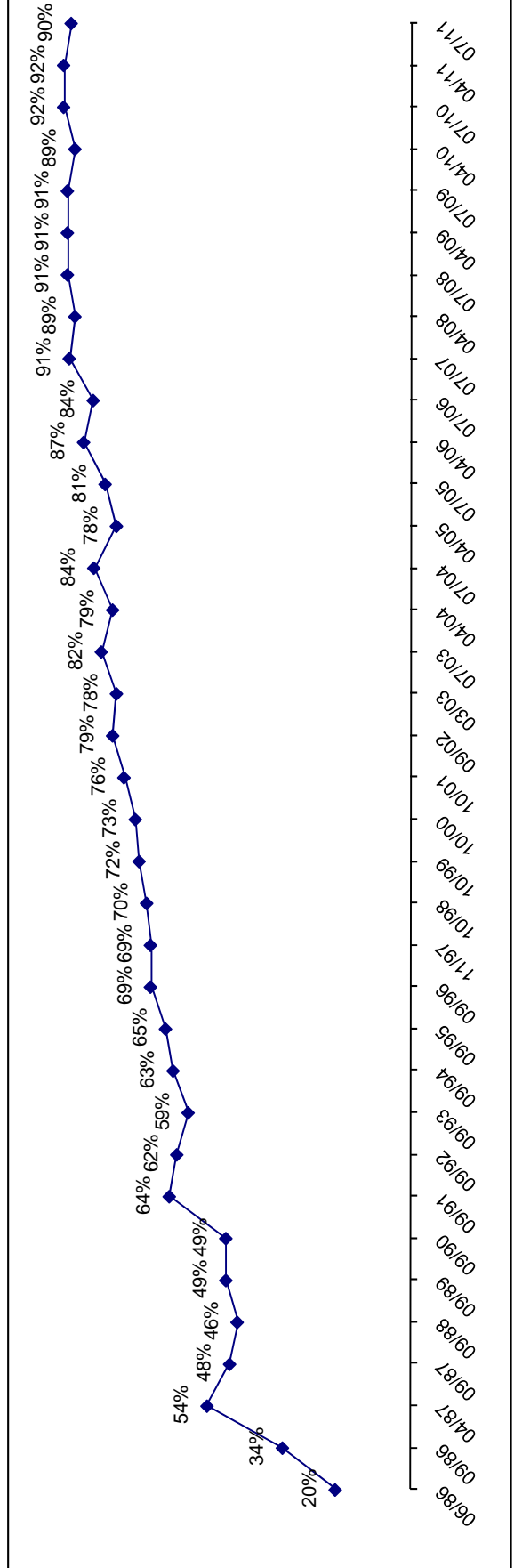


Chart 4
Seat Belt Usage Percent by Year—Municipal Road System



2011 Seat Belt Usage Survey

Chart 5
Seat Belt Usage Percent by Year—Primary Road System

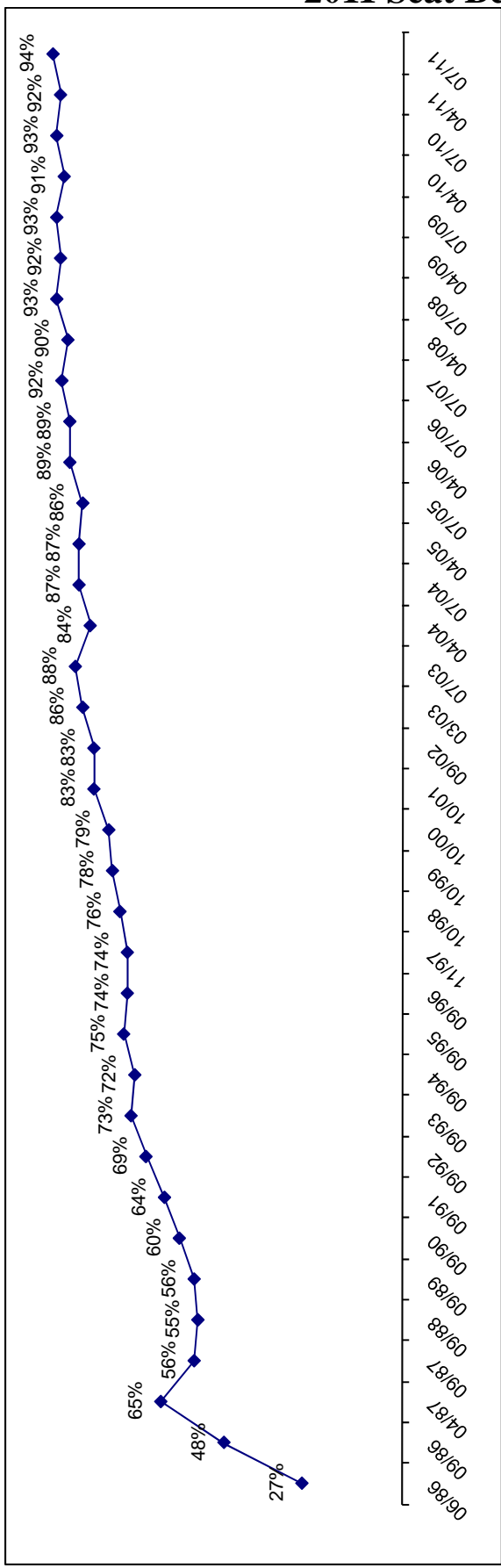
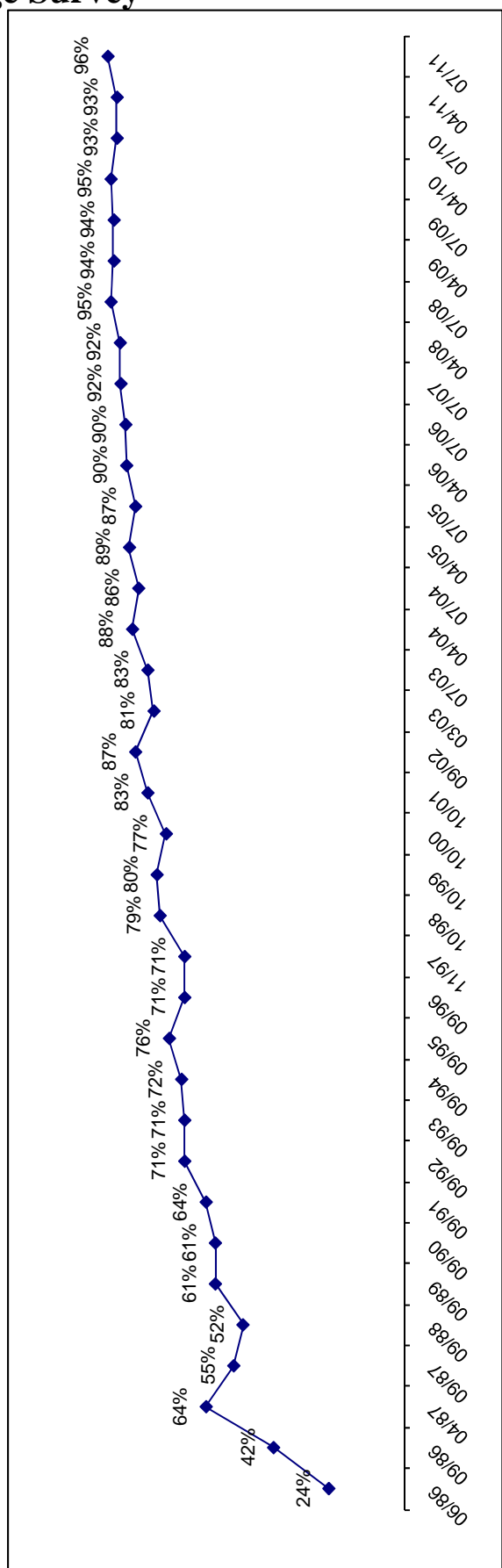
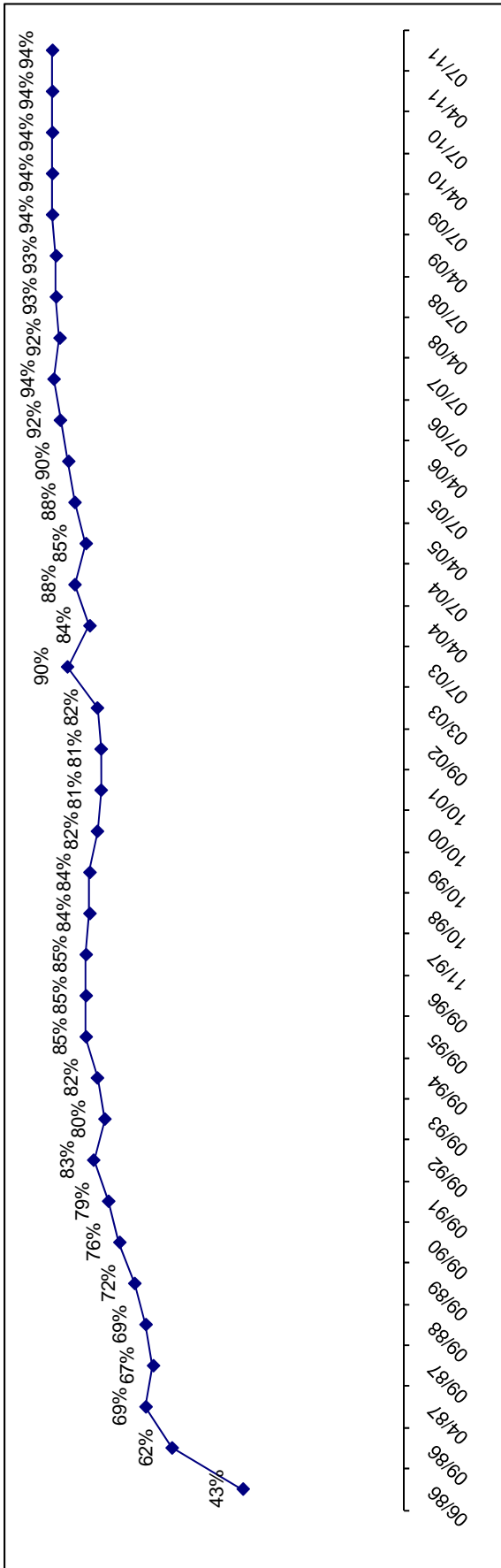


Chart 6
Seat Belt Usage Percent by Year—Secondary Road System



2011 Seat Belt Usage Survey

Chart 7
Seat Belt Usage Percent by Year—Interstate Highway System



2011 Seat Belt Usage Survey

Chart 8
April Survey by Road System

Road System	Drivers						
	Belt		None		Unknown		Total
	#	%	#	%	#	%	#
Municipal	3,763	89.0%	337	8.0%	130	3.1%	4,230
Primary	3,431	91.3%	270	7.2%	58	1.5%	3,759
Secondary	651	90.3%	50	6.9%	20	2.8%	721
Interstate	1,577	90.9%	86	5.0%	72	4.1%	1,735
Total	9,422	90.2%	743	7.1%	280	2.7%	10,445
	Passengers						
Municipal	1,011	89.3%	89	7.9%	32	2.8%	1,132
Primary	815	87.4%	104	11.1%	14	1.5%	933
Secondary	150	90.4%	7	4.2%	9	5.4%	166
Interstate	432	87.8%	38	7.7%	22	4.5%	492
Total	2,408	88.4%	238	8.7%	77	2.8%	2,723
	Total						
Municipal	4,774	89.0%	426	7.9%	162	3.0%	5,362
Primary	4,246	90.5%	374	8.0%	72	1.5%	4,692
Secondary	801	90.3%	57	6.4%	29	3.3%	887
Interstate	2,009	90.2%	124	5.6%	94	4.2%	2,227
Total	11,830	89.8%	981	7.4%	357	2.7%	13,168

Chart 9
July Survey by Road System

Road System	Drivers						
	Belt		None		Unknown		Total
	#	%	#	%	#	%	#
Municipal	3,578	87.9%	365	9.0%	126	3.1%	4,069
Primary	3,254	91.7%	210	5.9%	84	2.4%	3,548
Secondary	649	93.2%	32	4.6%	15	2.2%	696
Interstate	1,030	90.0%	61	5.3%	53	4.6%	1,144
Total	8,511	90.0%	668	7.1%	278	2.9%	9,457
	Passengers						
Municipal	766	85.3%	101	11.2%	31	3.5%	898
Primary	891	91.1%	69	7.1%	18	1.8%	978
Secondary	187	93.5%	7	3.5%	6	3.0%	200
Interstate	343	90.5%	20	5.3%	16	4.2%	379
Total	2,187	89.1%	197	8.0%	71	2.9%	2,455
	Total						
Municipal	4,344	87.5%	466	9.4%	157	3.2%	4,967
Primary	4,145	91.6%	279	6.2%	102	2.3%	4,526
Secondary	836	93.3%	39	4.4%	21	2.3%	896
Interstate	1,373	90.2%	81	5.3%	69	4.5%	1,523
Total	10,698	89.8%	865	7.3%	349	2.9%	11,912

Chart 10
April/July Change

Road System	Drivers						
	Belt		None		Unknown		Total
	#	%	#	%	#	%	#
Municipal	-185	-1.0%	28	1.0%	-4	0.0%	-161
Primary	-177	0.4%	-60	-1.3%	26	0.8%	-211
Secondary	-2	3.0%	-18	-2.3%	-5	-0.6%	-25
Interstate	-547	-0.9%	-25	0.4%	-19	0.5%	-591
Total	-911	-0.2%	-75	0.0%	-2	0.3%	-988
	Passengers						
Municipal	-245	-4.0%	12	3.4%	-1	0.6%	-234
Primary	76	3.8%	-35	-4.1%	4	0.3%	45
Secondary	37	3.1%	0	-0.7%	-3	-2.4%	34
Interstate	-89	2.7%	-18	-2.4%	-6	-0.2%	-113
Total	-221	0.7%	-41	-0.7%	-6	0.1%	-268
	Total						
Municipal	-430	-1.6%	40	1.4%	-5	0.1%	-395
Primary	-101	1.1%	-95	-1.8%	30	0.7%	-166
Secondary	35	3.0%	-18	-2.1%	-8	-0.9%	9
Interstate	-636	-0.1%	-43	-0.2%	-25	0.3%	-704
Total	-1,132	0.0%	-116	-0.2%	-8	0.2%	-1,256

2011 Seat Belt Usage Survey

Chart 11

Seat Belt Usage by Road System and Population

Population and Road System	Usage			
	April		July	
A Over 200,000	2,065	90.10%	1,501	87.32%
Municipal	685	89.90%	679	84.35%
Primary	517	88.68%	358	89.05%
Secondary	2	66.67%	6	100.00%
Interstate	861	91.21%	458	90.51%
B 150,000 TO 199,999	2,981	96.16%	2,772	96.02%
Municipal	1,358	95.90%	1,126	95.34%
Primary	768	95.64%	847	95.60%
Secondary	280	96.55%	291	97.00%
Interstate	575	97.29%	508	97.69%
C 75,000 TO 149,999	1,472	93.05%	1,294	90.93%
Municipal	530	90.75%	520	87.99%
Primary	502	92.96%	435	91.00%
Secondary	61	98.39%	29	96.67%
Interstate	379	95.71%	310	95.68%
D 25,000 TO 74,999	2,143	92.65%	1,654	93.24%
Municipal	856	91.55%	546	88.64%
Primary	954	94.55%	826	96.05%
Secondary	244	88.41%	256	95.17%
Interstate	89	95.70%	26	89.66%
E Under 25,000	3,169	89.93%	3,477	92.47%
Municipal	1,345	89.49%	1,473	91.09%
Primary	1,505	89.32%	1,679	93.38%
Secondary	214	94.27%	254	94.07%
Interstate	105	96.33%	71	94.67%
Total	11,830	92.34%	10,698	92.52%
Municipal	4,774	91.81%	4,344	90.31%
Primary	4,246	91.90%	4,145	93.69%
Secondary	801	93.36%	836	95.54%
Interstate	2,009	94.19%	1,373	94.43%

Chart 12

Seat Belt Usage by Population and Road System

Population and Road System	Usage			
	April		July	
Municipal	4,734	129.31%	4,334	
Over 200,000	723	91.29%	784	84.21%
150,000 to 199,999	1,358	95.90%	1,126	95.34%
75,000 to 149,999	530	90.75%	520	87.99%
25,000 to 74,999	778	89.53%	431	88.50%
Under 25,000	1,345	89.49%	1,473	91.09%
Primary	4,154	92.09%	4,168	94.02%
Over 200,000	344	89.35%	275	91.67%
150,000 to 199,999	768	95.64%	847	95.60%
75,000 to 149,999	502	92.96%	435	91.00%
25,000 to 74,999	1,035	94.26%	932	95.98%
Under 25,000	1,505	89.32%	1,679	93.38%
Secondary	933	93.02%	823	94.71%
Over 200,000	215	90.72%	99	89.19%
150,000 to 199,999	280	96.55%	291	97.00%
75,000 to 149,999	61	98.39%	29	96.67%
25,000 to 74,999	163	87.17%	150	94.94%
Under 25,000	214	94.27%	254	94.07%
Interstate	2,009	94.19%	1,373	94.43%
Over 200,000	861	91.21%	458	90.51%
150,000 to 199,999	575	97.29%	508	97.69%
75,000 to 149,999	379	95.71%	310	95.68%
25,000 to 74,999	89	95.70%	26	89.66%
Under 25,000	105	96.33%	71	94.67%
Total	11,830	92.34%	10,698	92.52%
Over 200,000	2,143	90.88%	1,616	87.45%
150,000 to 199,999	2,981	96.16%	2,772	96.02%
75,000 to 149,999	1,472	93.05%	1,294	90.93%
25,000 to 74,999	2,065	91.90%	1,539	93.56%
Under 25,000	3,169	89.93%	3,477	92.47%

Chart 13

Seat Usage by Area of State and Road System

Area of State and Road System	Usage			
	April		July	
Northeast	2,910	93.75%	2,631	93.66%
Municipal	183	93.85%	209	94.14%
Primary	1,307	93.22%	1,112	93.21%
Secondary	339	91.13%	201	90.13%
Interstate	1,081	95.24%	1,109	94.71%
Northwest	3,139	91.57%	3,258	92.16%
Municipal	350	96.15%	265	96.01%
Primary	488	92.42%	483	92.88%
Secondary	726	84.71%	731	83.54%
Interstate	1,575	93.81%	1,779	95.44%
Southeast	2,449	93.33%	1,970	91.50%
Municipal	934	94.15%	686	92.20%
Primary	716	93.96%	660	97.06%
Secondary	799	91.84%	624	85.60%
Interstate	0	0.00%	0	0.00%
Southwest	3,332	91.16%	2,839	92.60%
Municipal	1,060	93.97%	871	95.19%
Primary	1,829	89.26%	1,539	90.53%
Secondary	370	92.96%	383	94.57%
Interstate	73	91.25%	46	100.00%
Total	11,830	92.34%	10,698	92.52%
Municipal	2,527	94.33%	2,031	94.16%
Primary	4,340	91.54%	3,794	92.69%
Secondary	2,234	89.47%	1,939	86.87%
Interstate	2,729	94.30%	2,934	95.23%

2011 Seat Belt Usage Survey

Chart 14

Seat Belt Usage by Day of Week and Road System

Day of Week and Road System	Usage			
	April		July	
Sunday	1,848	89.02%	1,531	88.50%
Municipal	218	85.49%	296	91.36%
Primary	1,427	89.58%	1,095	89.68%
Secondary	155	88.07%	110	70.97%
Interstate	48	92.31%	30	100.00%
Monday	1,268	91.09%	1,144	90.94%
Municipal	394	95.63%	336	96.00%
Primary	176	97.24%	180	96.77%
Secondary	533	86.95%	449	84.24%
Interstate	165	88.71%	179	94.71%
Tuesday	2,484	95.06%	2,362	93.29%
Municipal	625	97.35%	450	97.40%
Primary	293	93.91%	265	93.31%
Secondary	696	91.70%	760	88.58%
Interstate	870	96.67%	887	95.58%
Wednesday	2,862	92.80%	2,215	93.38%
Municipal	835	94.46%	548	93.20%
Primary	968	89.55%	909	92.38%
Secondary	564	93.22%	314	91.55%
Interstate	495	96.30%	444	97.16%
Thursday	759	94.17%	714	93.82%
Municipal	0	0.00%	0	0.00%
Primary	438	94.60%	417	92.87%
Secondary	0	0.00%	0	0.00%
Interstate	321	93.59%	297	95.19%
Friday	1,171	92.86%	817	92.42%
Municipal	397	94.30%	365	92.17%
Primary	325	94.20%	172	91.49%
Secondary	7	100.00%	9	81.82%
Interstate	442	90.57%	271	93.77%
Saturday	1,438	91.07%	1,915	94.52%
Municipal	58	89.23%	36	97.30%
Primary	713	93.08%	756	96.80%
Secondary	279	82.79%	297	89.46%
Interstate	388	94.40%	826	94.29%
Total	11,830	92.34%	10,698	92.52%
Municipal	2,527	94.33%	2,031	94.16%
Primary	4,340	91.54%	3,794	92.69%
Secondary	2,234	89.47%	1,939	86.87%
Interstate	2,729	94.30%	2,934	95.23%

Chart 15

Seat Belt Usage by Time of Day and Road System

Time of Day and Road System	Usage			
	April		July	
7 a.m. to 7:59 a.m.	1,047	91.84%	975	93.84%
Municipal	248	90.84%	222	92.12%
Primary	649	92.98%	636	96.36%
Secondary	24	77.42%	13	68.42%
Interstate	126	91.30%	104	87.39%
8 a.m. to 8:59 a.m.	592	85.43%	618	89.57%
Municipal	115	91.27%	131	95.62%
Primary	244	77.22%	216	79.12%
Secondary	121	95.28%	162	98.18%
Interstate	112	90.32%	109	94.78%
9 a.m. to 9:59 a.m.	752	91.82%	1,126	88.94%
Municipal	288	91.14%	651	88.45%
Primary	79	96.34%	140	97.22%
Secondary	49	98.00%	36	100.00%
Interstate	336	90.57%	299	85.43%
10 a.m. to 10:59 a.m.	1,166	94.41%	1,122	96.56%
Municipal	501	94.71%	398	96.84%
Primary	665	94.19%	724	96.40%
Secondary	0	0.00%	0	0.00%
Interstate	0	0.00%	0	0.00%
11 a.m. to 11:59 a.m.	627	88.19%	467	89.98%
Municipal	0	0.00%	0	0.00%
Primary	301	92.62%	229	97.86%
Secondary	142	78.45%	131	82.91%
Interstate	184	89.76%	107	84.25%
12 p.m. to 12:59 p.m.	1,124	93.67%	734	93.98%
Municipal	200	96.15%	221	94.44%
Primary	693	93.90%	404	94.84%
Secondary	18	90.00%	16	100.00%
Interstate	213	91.03%	93	88.57%
1 p.m. to 1:59 p.m.	864	90.57%	802	86.42%
Municipal	95	71.43%	42	56.00%
Primary	483	92.53%	552	87.34%
Secondary	0	0.00%	0	0.00%
Interstate	286	95.65%	208	94.12%
2 p.m. to 2:59 p.m.	1,500	91.52%	1,281	93.85%
Municipal	121	94.53%	167	93.82%
Primary	688	89.82%	467	92.84%
Secondary	370	93.91%	251	97.67%
Interstate	321	91.45%	396	92.74%
3 p.m. to 3:59 p.m.	369	91.56%	419	95.23%
Municipal	0	0.00%	0	0.00%
Primary	185	86.45%	198	92.52%
Secondary	53	98.15%	104	100.00%
Interstate	131	97.04%	117	95.90%
4 p.m. to 4:59 p.m.	1,381	93.63%	1,077	93.73%
Municipal	244	92.78%	176	95.14%
Primary	335	93.06%	326	93.95%
Secondary	459	95.82%	382	95.50%
Interstate	343	91.96%	193	88.94%
5 p.m. to 5:59 p.m.	581	95.09%	547	94.64%
Municipal	381	93.61%	293	92.72%
Primary	74	100.00%	110	94.83%
Secondary	126	96.92%	144	98.63%
Interstate	0	0.00%	0	0.00%
6 p.m. to 6:59 p.m.	1,827	94.61%	1,530	92.95%
Municipal	69	90.79%	117	87.31%
Primary	945	94.59%	941	94.29%
Secondary	561	93.66%	318	90.08%
Interstate	252	98.05%	154	95.65%
Total	11,830	92.34%	10,698	92.52%
Municipal	2,262	91.99%	2,418	91.35%
Primary	5,341	92.09%	4,943	93.30%
Secondary	1,923	93.12%	1,557	94.14%
Interstate	2,304	92.64%	1,780	90.63%

2011 Seat Belt Usage Survey

Chart 16

Site Selection by County

County	Population	Category	Area	Sites	County	Population	Category	Area	Sites
Adair	8,243	E	SW		Jefferson	16,181	E	SE	
Adams	4,482	E	SW		Johnson	111,006	C	SE	
Allamakee	14,675	E	NE		Jones	20,221	E	SE	
Appanoose	13,721	E	SE		Keokuk	11,400	E	SE	1
Audubon	6,830	E	SW		Kossuth	17,163	E	NW	
Benton	25,308	E	NE		Lee	38,052	D	SE	
Black Hawk	128,012	B	NE		Linn	191,701	B	NE	9
Boone	26,224	D	NW		Louisa	12,183	E	SE	3
Bremer	23,325	B	NE		Lucas	9,422	E	SE	
Buchanan	21,093	E	NE		Lyon	11,763	E	NW	
Buena Vista	20,411	E	NW	5	Madison	14,019	E	SW	
Butler	15,305	E	NE	5	Mahaska	22,335	E	SE	
Calhoun	11,115	E	NW		Marion	32,052	D	SE	
Carroll	21,421	E	NE		Marshall	39,311	D	NE	
Cass	14,684	E	SW		Mills	14,547	E	SW	
Cedar	18,187	E	SE		Mitchell	10,874	E	NE	
Cerro Gordo	46,447	D	NE		Monona	10,020	E	NW	
Cherokee	13,035	E	NW		Monroe	8,016	E	SE	
Chickasaw	13,095	E	NE		Montgomery	11,771	E	SW	
Clarke	9,133	E	SW	2	Muscatine	41,722	E	SE	
Clay	17,372	E	NW	7	O'Brien	15,102	E	NW	
Clayton	18,678	E	NE		Osceola	7,003	E	NW	
Clinton	50,149	D	SE		Page	16,976	E	SW	
Crawford	16,942	E	NW		Palo Alto	10,147	E	NW	
Dallas	40,750	A	SW	2	Plymouth	24,849	E	NW	
Davis	8,541	E	SE		Pocahontas	8,662	E	NW	
Decatur	8,689	E	SW	6	Polk	374,601	A	SW	9
Delaware	18,404	E	NE		Pottawattamie	87,704	C	SW	12
Des Moines	42,351	D	SE		Poweshiek	18,815	E	SE	
Dickinson	16,424	E	NW		Ringgold	5,469	E	SW	
Dubuque	89,143	C	NE		Sac	11,529	E	NW	
Emmet	11,027	E	NW		Scott	158,668	B	SE	8
Fayette	22,008	D	NE		Shelby	13,173	E	SW	
Floyd	16,900	E	NE		Sioux	31,589	D	NW	
Franklin	10,704	E	NE	6	Story	79,981	D	NW	12
Fremont	8,010	E	SW		Tama	18,103	E	NE	
Greene	10,366	E	NW		Taylor	6,958	E	SW	
Grundy	12,369	E	NE		Union	12,309	E	SW	
Guthrie	11,353	E	NW		Van Buren	7,809	E	SE	
Hamilton	16,438	E	NW		Wapello	36,051	D	SE	7
Hancock	12,100	E	NW		Warren	40,671	A	SW	2
Hardin	18,812	E	NE		Washington	20,670	E	SE	4
Harrison	15,666	E	SW		Wayne	6,730	E	SE	
Henry	20,336	E	SE		Webster	40,235	D	NW	
Howard	9,932	E	NE		Winnebago	11,723	E	NW	
Humboldt	10,381	E	NW		Winneshiek	21,310	E	NE	
Ida	7,837	E	NW		Woodbury	103,877	C	NW	
Iowa	15,671	E	SE		Worth	7,909	E	NE	
Jackson	20,296	E	NE		Wright	14,334	E	NW	
Jasper	37,213	D	SE		Totals	2,926,324			100

NOTE: Population data based on the 2000 Census

2011 Seat Belt Usage Survey

Chart 17

Site Selection by Area of State

Area of State	Northeast	Southeast	Northwest	Southwest	Totals
Number of Selected Sites	20	23	24	33	100
Number of Possible Counties	25	25	29	20	99
Number of Selected Counties	3	5	3	6	17
Percentage of Counties Selected	12.00%	16.00%	10.34%	30.00%	17.17%
Total Population in Area	835,135	777,502	599,002	714,685	2,926,324.00
Percentage of Total State Populatio	28.54%	26.57%	20.47%	24.42%	100.00%

Chart 18

Site Selection by Population Category

Area of State	A - Over 200,000	B - 150,000 to 200,000	C - 75,000 to 150,000	D - 25,000 to 75,000	E - Under 25,000	Total
Number of Selected Sites	13	17	12	19	39	61
Number of Possible Counties	3	4	4	13	75	24
Number of Selected Counties	3	2	1	2	9	17
Percentage of Counties Selected	3.00%	2.00%	1.00%	2.00%	9.00%	17.00%
Total Population in Area	456,022	501,706	391,730	521,663	1,055,203	2,926,324.00
Percentage of Total State Populatio	15.58%	17.14%	13.39%	17.83%	36.06%	100.00%

Chart 19

2010 Statewide Vehicle Miles of Travel

Vehicle Miles	Municipal	Rural	Total	Percentage
Statewide Total	12,950,811	18,628,545	31,579,356	100.00%
Municipal	6,820,148	NA	6,820,148	21.60%
Primary	3,606,232	8,128,575	11,734,807	37.16%
Secondary	NA	5,295,950	5,295,950	16.77%
Interstate	2,524,431	5,204,020	7,728,451	24.47%

NOTE: Vehicle miles of travel reported in 1,000,000 and provided by the Iowa Dept. of Transportation's Office of Transportation Data & counts only cars, pickups, vans & SUVs

2011 Seat Belt Usage Survey

Chart 20

April Seat Belt Survey Sites

No	County	Area	Day	Time	Location	City	Population	System	Observed	Belted
1	Polk	SW	WED	3 PM	Aurora @ Beaver	Des Moines	A	M	169	157
2	Story	NW	WED	12 PM	6th @ Grand	Ames	D	M	139	119
3	Story	NW	FRI	8 AM	Duff Exit @ Hwy 30	Ames	D	P	198	173
4	Story	NW	WED	1 PM	E23 @ Hwy 69		D	S	89	81
5	Story	NW	THU	1 PM	E63 @ Hwy 65		D	S	20	18
6	Polk	SW	FRI	10 AM	7th & Grand	Des Moines	A	M	234	213
7	Story	NW	MON	8 AM	Hwy 133 @ Hwy 30		D	P	62	56
8	Dallas	SW	WED	10 AM	Hwy 141 @ Hwy 210		A	P	47	38
9	Polk	SW	FRI	8 AM	Hwy 160 @ Hwy 69	Ankeny	A	P	205	184
10	Story	NW	SAT	10 AM	Hwy 210 @ Hwy 65		D	P	29	24
11	Story	NW	FRI	12 PM	Hwy 210 @ Hwy 69		D	P	164	155
12	Story	NW	WED	1 PM	Hwy 65 @ Hwy 30		D	P	93	83
13	Polk	SW	SAT	8 AM	Hwy 945 @ Hwy 931		A	P	24	20
14	Story	NW	THU	3 PM	I-35 Exit # 123		D	I	28	25
15	Polk	SW	WED	3 PM	I-35 Exit # 92		A	I	237	213
16	Polk	SW	FRI	10 AM	I-35 Rest Area		A	I	12	9
17	Story	NW	FRI	12 PM	I-35 Rest Area		D	I	65	64
18	Dallas	SW	WED	5 PM	I-80 Exit # 110		A	I	431	409
19	Polk	SW	WED	5 PM	I-80 Exit # 143		A	I	264	230
20	Polk	SW	SAT	12 PM	Indianola Ave @ SE 8th	Des Moines	A	M	101	83
21	Story	NW	THU	5 PM	J Ave. @ 6th	Nevada	D	M	121	109
22	Story	NW	MON	10 AM	Main @ Clark	Ames	D	M	38	30
23	Polk	SW	MON	12 PM	Meredith @ Merle Hay	Des Moines	A	M	522	483
24	Clarke	SW	TUE	4 PM	E Washington @ Main St	Osceola	E	M	105	93
25	Decatur	SW	TUE	7 AM	J 12 @ Hwy 69	Weldon	E	P	52	48
26	Warren	SW	TUE	6 PM	Hwy 28 @ Hwy 92	Martensdale	A	P	109	102
27	Clarke	SW	TUE	9 AM	Hwy 34 @ Hwy 69		E	P	199	169
28	Decatur	SW	TUE	11 AM	I-35 Exit # 12		E	I	50	49
29	Decatur	SW	FRI	2 PM	I-35 Exit # 22		E	I	24	24
30	Decatur	SW	TUE	8 AM	J 20 @ R69	Garden Grove	E	S	12	12
31	Decatur	SW	FRI	4 PM	J 66 @ Hwy 69	Davis City	E	S	16	13
32	Warren	SW	FRI	6 PM	R 57 @ Hwy 92		A	S	3	2
33	Decatur	SW	TUE	2 PM	West Jct. Hwy 69 @ Hwy 2	Leon	E	P	62	57
34	Pottawattamie	SW	SAT	8 AM	9th Ave. @ S 16th	Council Bluffs	C	M	213	194
35	Pottawattamie	SW	SAT	12 PM	A Ave & 25th St	Council Bluffs	C	M	371	336
36	Pottawattamie	SW	SAT	9 AM	Hwy 191 @ Hwy 83		C	P	86	83
37	Pottawattamie	SW	SAT	11 AM	Hwy 6 @ Hwy 191		C	P	138	126
38	Pottawattamie	SW	SAT	8 AM	Hwy 6 @ Hwy 59		C	P	128	121
39	Pottawattamie	SW	SUN	5 PM	Hwy 83 @ Hwy 59		C	P	64	60
40	Pottawattamie	SW	SAT	10 AM	Hwy 92 @ Hwy 59		C	P	124	112
41	Pottawattamie	SW	SAT	10 AM	I-29 Exit # 47		C	I	120	113
42	Pottawattamie	SW	SUN	6 PM	I-80 Exit # 40		C	I	148	145
43	Pottawattamie	SW	SAT	7 AM	I-80 Rest Area		C	I	128	121
44	Pottawattamie	SW	SUN	2 PM	L 55 @ Hwy 6		C	S	36	35
45	Pottawattamie	SW	SAT	12 PM	M 16 @ Hwy 92		C	S	26	26
46	Buena Vista	NW	SUN	4 PM	C 49 @ Hwy 71		E	S	78	76
47	Buena Vista	NW	SAT	4 PM	Hwy 110 @ Hwy 7		E	P	89	85
48	Buena Vista	NW	SUN	2 PM	Hwy 7 @ Hwy 71		E	P	99	96
49	Buena Vista	NW	SAT	2 PM	Hwy 7 @ Hwy 71		E	P	142	139
50	Buena Vista	NW	SUN	6 PM	Lake @ Third	Storm Lake	E	M	97	93
51	Clay	NW	FRI	7 AM	4th @ Grand	Spencer	E	M	260	246
52	Clay	NW	FRI	9 AM	B 53 @ Hwy 71		E	S	7	7
53	Clay	NW	THU	3 PM	Grand @ 18th	Spencer	E	M	437	424
54	Clay	NW	THU	5 PM	Hwy 10 @ Hwy 71		E	P	28	26
55	Clay	NW	SUN	10 AM	Hwy 18 @ Hwy 71		E	P	119	115
56	Clay	NW	THU	1 PM	B40 @ Hwy 71		E	P	45	43
57	Clay	NW	FRI	11 AM	N 14 @ Hwy 18		E	S	35	34
58	Franklin	NE	THU	3 PM	1st @ 1st Ave	Hampton	E	M	132	95
59	Franklin	NE	TUE	3 PM	C 25 @ Hwy 65		E	S	31	24
60	Butler	NE	TUE	12 PM	C 55 @ Hwy 14		E	S	3	3
61	Franklin	NE	TUE	10 AM	S14 & Hwy 107		E	P	10	10
62	Butler	NE	TUE	8 AM	Hwy 14 @ Hwy 20		E	P	58	45
63	Butler	NE	THU	5 PM	Hwy 14 @ Hwy 3		E	P	29	24
64	Butler	NE	TUE	4 PM	Hwy 188 @ Hwy 3		E	P	87	71
65	Franklin	NE	THU	1 PM	Hwy 65 @ Hwy 3		E	P	211	141
66	Franklin	NE	TUE	5 PM	I-35 Exit # 165		E	I	27	25
67	Franklin	NE	TUE	6 PM	I-35 Exit # 170		E	I	8	7
68	Butler	NE	TUE	1 PM	Main @ Railroad	Allison	E	M	133	95
69	Linn	NE	SAT	7 AM	8th Ave @ 2nd	Cedar Rapids	B	M	243	226
70	Linn	NE	MON	1 PM	E 34 @ Hwy 13		B	S	131	131
71	Linn	NE	SUN	6 PM	E 70 @ Hwy 151		B	S	85	82
72	Linn	NE	MON	3 PM	First Ave @ 29th	Cedar Rapids	B	M	297	282
73	Linn	NE	SUN	4 PM	Hwy 1 @ Hwy 30		B	P	144	140
74	Linn	NE	SAT	9 AM	Hwy 13 @ Hwy 151		B	P	313	294
75	Linn	NE	SUN	2 PM	Hwy 30 @ Hwy 1		B	P	184	175
76	Linn	NE	MON	5 PM	I-380 Mile Marker 13		B	I	158	151
77	Linn	NE	SAT	11 AM	I-380 Mile Marker 25		B	I	130	126
78	Scott	SE	WED	11 AM	F 55 Exit @ Hwy 61		B	P	50	49
79	Scott	SE	FRI	1 PM	Hwy 61 @ Hwy 22 Ramp		B	P	67	65
80	Scott	SE	FRI	3 PM	I-280 Hwy 61 Exit		B	I	249	245
81	Scott	SE	SUN	8 AM	I-80 Exit # 284 (Y40)		B	I	54	53
82	Scott	SE	FRI	5 PM	Kimberly @ Harrison	Davenport	B	M	459	448
83	Scott	SE	SUN	12 PM	Locust @ Brady	Davenport	B	M	417	402
84	Scott	SE	WED	7 AM	Long Grove Exit @ Hwy 61		B	P	45	45
85	Scott	SE	WED	9 AM	Y 48 @ Hwy 61		B	S	70	67
86	Washington	SE	WED	1 PM	East 7th @ North 4th	Washington	E	M	93	82
87	Washington	SE	WED	3 PM	G6W @ Hwy 92		E	S	21	21
88	Washington	SE	SUN	11 AM	Hwy 1 @ Hwy 92		E	P	131	126
89	Washington	SE	SUN	2 PM	Hwy 218 Ramp @ Hwy 92		E	P	186	182
90	Louisa	SE	WED	5 PM	Hwy 92 @ Hwy 61		E	P	138	128
91	Louisa	SE	SUN	6 PM	South 4th @ Washington	Wapello	E	M	76	57
92	Louisa	SE	SUN	4 PM	X 43 @ Hwy 92		E	S	24	24
93	Wapello	SE	FRI	3 PM	Church @ Richmond	Ottumwa	D	M	373	347
94	Wapello	SE	MON	1 PM	East Jct Hwy 34 & Hwy 63		D	P	213	203
95	Wapello	SE	MON	5 PM	Hwy 137 @ Hwy 63		D	P	254	240
96	Keokuk	SE	TUE	5 PM	Hwy 149 @ Hwy 23		D	P	74	74
97	Wapello	SE	TUE	3 PM	Hwy 16 @ Hwy 34		D	P	120	119
98	Wapello	SE	FRI	5 PM	T 61 @ Hwy 34		D	S	97	92
99	Wapello	SE	MON	3 PM	V 37 (College St) @ Hwy 34 Agency		D	S	70	53
100	Wapello	SE	TUE	1 PM	Wapello St @ Albia Rd	Ottumwa	E	M	170	160
									12,811	11,830

2011 Seat Belt Usage Survey

Chart 21

July Seat Belt Survey Sites										
No	County	Area	Day	Time	Location	City	Population	System	Observed	Belted
1	Polk	SW	MON	12 PM	Aurora @ Beaver	Des Moines	A	M	209	185
2	Story	NW	MON	8 AM	6th @ Grand	Ames	D	M	83	80
3	Story	NW	THU	7 AM	Duff Exit @ Hwy 30	Ames	D	P	102	83
4	Story	NW	THU	3 PM	E 23 @ Hwy 69		D	S	111	106
5	Story	NW	MON	10 AM	E 63 @ Hwy 65		D	S	16	16
6	Polk	SW	TUE	1 PM	Grand @ 7th	Des Moines	A	M	105	93
7	Story	NW	SAT	7 AM	Hwy 133 @ Hwy 30		D	P	31	30
8	Dallas	SW	MON	8 AM	Hwy 141 @ Hwy 210		A	P	45	44
9	Polk	SW	WED	10 AM	Hwy 160 @ Hwy 69	Ankeny	A	P	127	107
10	Story	NW	TUE	5 PM	Hwy 210 @ Hwy 65		D	P	47	43
11	Story	NW	WED	12 PM	Hwy 210 @ Hwy 69		D	P	94	88
12	Story	NW	TUE	5 PM	Hwy 65 @ Hwy 30		D	P	107	105
13	Polk	SW	TUE	1 PM	Hwy 945 @ Hwy 931		A	P	20	16
14	Story	NW	THU	1 PM	I-35 Exit # 123		D	I	16	16
15	Polk	SW	SAT	9 AM	I-35 Exit # 92		A	I	226	208
16	Polk	SW	SAT	11 AM	I-35 Rest Area		A	I	63	55
17	Story	NW	THU	9 AM	I-35 Rest Area		D	I	13	10
18	Dallas	SW	MON	12 PM	I-80 Exit # 110		A	I	161	147
19	Polk	SW	THU	11 AM	I-80 Exit # 143		A	I	56	48
20	Polk	SW	TUE	3 PM	Indianola Ave @ SE 8th	Des Moines	A	M	90	47
21	Story	NW	THU	5 PM	J Ave. @ 6th	Nevada	D	M	106	99
22	Story	NW	MON	10 AM	Main @ Clark	Ames	D	M	52	41
23	Polk	SW	TUE	3 PM	Meredith @ Merle Hay	Des Moines	A	M	632	552
24	Clarke	SW	SAT	5 PM	E Washington @ Main St	Osceola	E	M	27	27
25	Decatur	SW	SAT	3 PM	Hwy 266 @ Hwy 69	Weldon	E	P	30	30
26	Warren	SW	SAT	1 PM	Hwy 28 @ Hwy 92	Martensdale	A	P	108	108
27	Clarke	SW	THU	4 PM	Hwy 34 @ Hwy 69		E	P	308	296
28	Decatur	SW	THU	8 AM	I-35 Exit # 12		E	I	36	36
29	Decatur	SW	THU	8 AM	I-35 Exit # 22		E	I	2	2
30	Decatur	SW	THU	12 PM	J 20 @ Hwy 204	Garden Grove	E	S	14	14
31	Decatur	SW	THU	12 PM	J 66 @ Hwy 69	Davis City	E	S	13	9
32	Warren	SW	THU	10 AM	R 57 @ Hwy 92		A	S	6	6
33	Decatur	SW	THU	10 AM	West Jct. Hwy 69 @ Hwy 2	Leon	E	P	79	68
34	Pottawattamie	SW	MON	7 AM	9th Ave. @ S 16th	Council Bluffs	C	M	241	221
35	Pottawattamie	SW	THU	2 PM	A Ave & 25th St	Council Bluffs	C	M	350	299
36	Pottawattamie	SW	SAT	10 AM	Hwy 191 @ Hwy 83		C	P	78	75
37	Pottawattamie	SW	THU	6 PM	Hwy 6 @ Hwy 191		C	P	119	104
38	Pottawattamie	SW	MON	9 AM	Hwy 6 @ Hwy 59		C	P	95	85
39	Pottawattamie	SW	MON	12 PM	Hwy 83 @ Hwy 59		C	P	71	62
40	Pottawattamie	SW	SAT	8 AM	Hwy 92 @ Hwy 59		C	P	115	109
41	Pottawattamie	SW	MON	10 M	I-29 Exit # 47		C	I	59	58
42	Pottawattamie	SW	MON	11 AM	I-80 Exit # 40		C	I	87	85
43	Pottawattamie	SW	MON	8 AM	I-80 Rest Area		C	I	178	167
44	Pottawattamie	SW	THU	4 PM	L 55 @ Hwy 6		C	S	15	14
45	Pottawattamie	SW	SAT	12 PM	M 16 @ Hwy 92		C	S	15	15
46	Buena Vista	NW	TUE	8 AM	C 49 @ Hwy 71		E	S	108	106
47	Buena Vista	NW	MON	12 PM	Hwy 110 @ Hwy 7		E	P	101	100
48	Buena Vista	NW	MON	10 AM	Hwy 7 @ Hwy 71		E	P	149	146
49	Buena Vista	NW	TUE	10 AM	Hwy 7 @ Hwy 71		E	P	153	148
50	Buena Vista	NW	MON	8 AM	Lake @ Third	Storm Lake	E	M	136	130
51	Clay	NW	SAT	6 PM	4th @ Grand	Spencer	E	M	220	213
52	Clay	NW	WED	2 PM	B 53 @ Hwy 71		E	S	11	9
53	Clay	NW	FRI	12 PM	Grand @ 18th	Spencer	E	M	321	310
54	Clay	NW	WED	4 PM	Hwy 10 @ Hwy 71		E	P	34	34
55	Clay	NW	WED	6 PM	Hwy 18 @ Hwy 71		E	P	127	126
56	Clay	NW	SAT	4 PM	B 40 @ Hwy 71		E	P	60	58
57	Clay	NW	SAT	2 PM	N 14 @ Hwy 18		E	S	50	48
58	Franklin	NE	SUN	6 PM	1st @ 1st Ave	Hampton	E	M	98	71
59	Franklin	NE	THU	10 AM	C 25 @ Hwy 65		E	S	19	13
60	Butler	NE	SAT	9 AM	C 55 @ Hwy 14		E	S	4	4
61	Franklin	NE	THU	12 PM	S 14 @ Hwy 3		E	P	22	21
62	Butler	NE	THU	8 AM	Hwy 14 @ Hwy 20		E	P	73	64
63	Butler	NE	SUN	4 PM	Hwy 14 @ Hwy 3		E	P	47	41
64	Butler	NE	TUE	12 PM	Hwy 188 @ Hwy 3		E	P	60	55
65	Franklin	NE	SUN	2 PM	Hwy 65 @ Hwy 3		E	P	159	104
66	Franklin	NE	TUE	10 AM	I-35 Exit # 165		E	I	28	25
67	Franklin	NE	SAT	11 AM	I-35 Exit # 170		E	I	9	8
68	Butler	NE	TUE	8 AM	Main @ Railroad	Allison	E	M	75	42
69	Linn	NE	FRI	1 PM	8th Ave @ 2nd	Cedar Rapids	B	M	222	205
70	Linn	NE	FRI	12 PM	E 34 @ Hwy 13		B	S	122	117
71	Linn	NE	SAT	6 PM	E 70 @ Hwy 151		B	S	48	48
72	Linn	NE	SAT	4 PM	First Ave @ 29th	Cedar Rapids	B	M	297	275
73	Linn	NE	FRI	5 PM	Hwy 1 @ Hwy 30		B	P	290	280
74	Linn	NE	FRI	10 AM	Hwy 13 @ Hwy 151		B	P	246	235
75	Linn	NE	FRI	3 PM	Hwy 30 @ Hwy 1		B	P	181	166
76	Linn	NE	FRI	8 AM	I-380 Mile Marker 13		B	I	118	114
77	Linn	NE	SAT	2 PM	I-380 Mile Marker 25		B	I	146	144
78	Scott	SE	SUN	9 AM	F 55 Exit @ Hwy 61		B	P	44	44
79	Scott	SE	SUN	7 AM	Hwy 61 @ Hwy 22 Ramp		B	P	56	55
80	Scott	SE	THU	11 AM	I-280 Hwy 61 Exit		B	I	152	146
81	Scott	SE	TUE	10 AM	I-80 Exit # 284 (Y40)		B	I	104	104
82	Scott	SE	TUE	12 PM	Kimberly @ Harrison	Davenport	B	M	341	332
83	Scott	SE	TUE	8 AM	Locust @ Brady	Davenport	B	M	321	314
84	Scott	SE	THU	7 AM	Long Grove Exit @ Hwy 61		B	P	69	67
85	Scott	SE	SUN	11 AM	Y 48 @ Hwy 61		B	S	130	126
86	Washington	SE	SAT	11 AM	East 7th @ North 4th	Washington	E	M	82	74
87	Washington	SE	SAT	12 PM	G6W @ Hwy 92		E	S	26	26
88	Washington	SE	SAT	9 AM	Hwy 1 @ Hwy 92		E	P	112	110
89	Washington	SE	TUE	11 AM	Hwy 218 Ramp @ Hwy 92		E	P	151	149
90	Louisa	SE	TUE	7 AM	Hwy 92 @ Hwy 61		E	P	133	129
91	Louisa	SE	SAT	7 AM	South 4th @ Washington	Wapello	E	M	81	69
92	Louisa	SE	TUE	9 AM	X 43 @ Hwy 92		E	S	25	25
93	Wapello	SE	SUN	9 AM	Church @ Richmond	Ottumwa	D	M	144	128
94	Wapello	SE	MON	4 PM	East Jct. Hwy 34 @ Hwy 63		D	P	283	273
95	Wapello	SE	SUN	7 AM	Hwy 137 @ Hwy 63		D	P	89	85
96	Keokuk	SE	TUE	3 PM	Hwy 149 @ Hwy 23		D	P	116	110
97	Wapello	SE	SUN	11 AM	Hwy 16 @ Hwy 34		D	P	93	92
98	Wapello	SE	TUE	1 PM	T 61 @ Hwy 34		D	S	72	68
99	Wapello	SE	MON	2 PM	V 37 (College St) @ Hwy 34 Agency		D	S	70	66
100	Wapello	SE	TUE	5 PM	Wapello St @ Albia Rd	Ottumwa	E	M	577	537
									11,563	10,698