

**DEPARTMENT OF TRANSPORTATION
COMMISSION ORDER**

Division/Bureau/Office Planning, Programming and Modal Division
Systems Planning Bureau Order No. PPM-2020-41
 Submitted by Craig Markley Phone No. 515-239-1027 Meeting Date January 14, 2020
 Title Statewide Transportation Alternatives Program Funding Recommendations

DISCUSSION/BACKGROUND:

Review of the current round of applications for funding from the statewide Transportation Alternatives Program has been completed. The following funding recommendations will be presented.

Iowa Safe Routes to School Partnership (Iowa Northland Regional Council of Governments and Upper Explorerland Regional Planning Commission)	\$ 201,055
Manning Safe Routes to School – South Phase I (Manning)	\$ 49,200
UNI Integrated Roadside Vegetation Management (University of Northern, Iowa and UNI Integrated Roadside Vegetation Management)	\$ 541,400
US 65 Underpass (Bondurant)	\$ 536,000
 Total	 \$1,327,655

PROPOSAL/ACTION RECOMMENDATION:

It is recommended the Commission approve the Statewide Transportation Alternatives program funding recommendations as listed.

COMMISSION ACTION:		Vote	
		Aye	Nay
	Arnold	<u>x</u>	_____
	Fehrman	<u>x</u>	_____
	Juckette	<u>x</u>	_____
Moved by <u>John Putney</u>	Maher	<u>x</u>	_____
Seconded by <u>Kathy Fehrman</u>	Putney	<u>x</u>	_____
	Rielly	<u>x</u>	_____
	Yanney	<u>absent</u>	_____
_____	_____		
Division Director	Legal	State Director	



Statewide Iowa's Transportation Alternatives Program
Funding Recommendation

Statewide Iowa's Transportation Alternatives Program

- **Current version of former Transportation Enhancement program that has existed since 1991.**
- **Majority of funding is distributed to Iowa's RPAs and MPOs with \$1 million reserved for statewide projects**
- **Eligible activities include:**
 - On-road and off-road non-motorized trail facilities, safe routes for non-drivers, conversion of abandoned rail corridors for trails, preservation/rehabilitation of historic transportation facilities among others
 - Federal Recreational Trails Program eligible activities
 - Infrastructure-related or non-infrastructure related Safe Routes to School Projects (if local TAP funds are used as well)
 - Scenic Byways (if local TAP funds are used as well)

Project Evaluation Criteria

- **Statewide or multi-regional impact of the project (35 points)**
- **Degree of enhancement of the quality or utility of the state surface transportation system (20 points)**
- **State or multi-regional tourism benefits(10 points)**
- **Degree of statewide or multi-regional planning implemented (35 points)**

Available Funding and Application Summary

- **Estimated FY 2020 Appropriation: \$10,764,227**
 - \$1,374,817 set aside for Recreational Trails.
 - Half (\$4,694,705) reserved for local projects, half stays at the state level.
 - The set-aside for Statewide TAP is \$1,000,000
 - Remaining \$3,694,705 of state level funding is reserved for eligible local projects:
 - Transportation Alternatives Program
 - Highway
 - Bridge
 - Transit

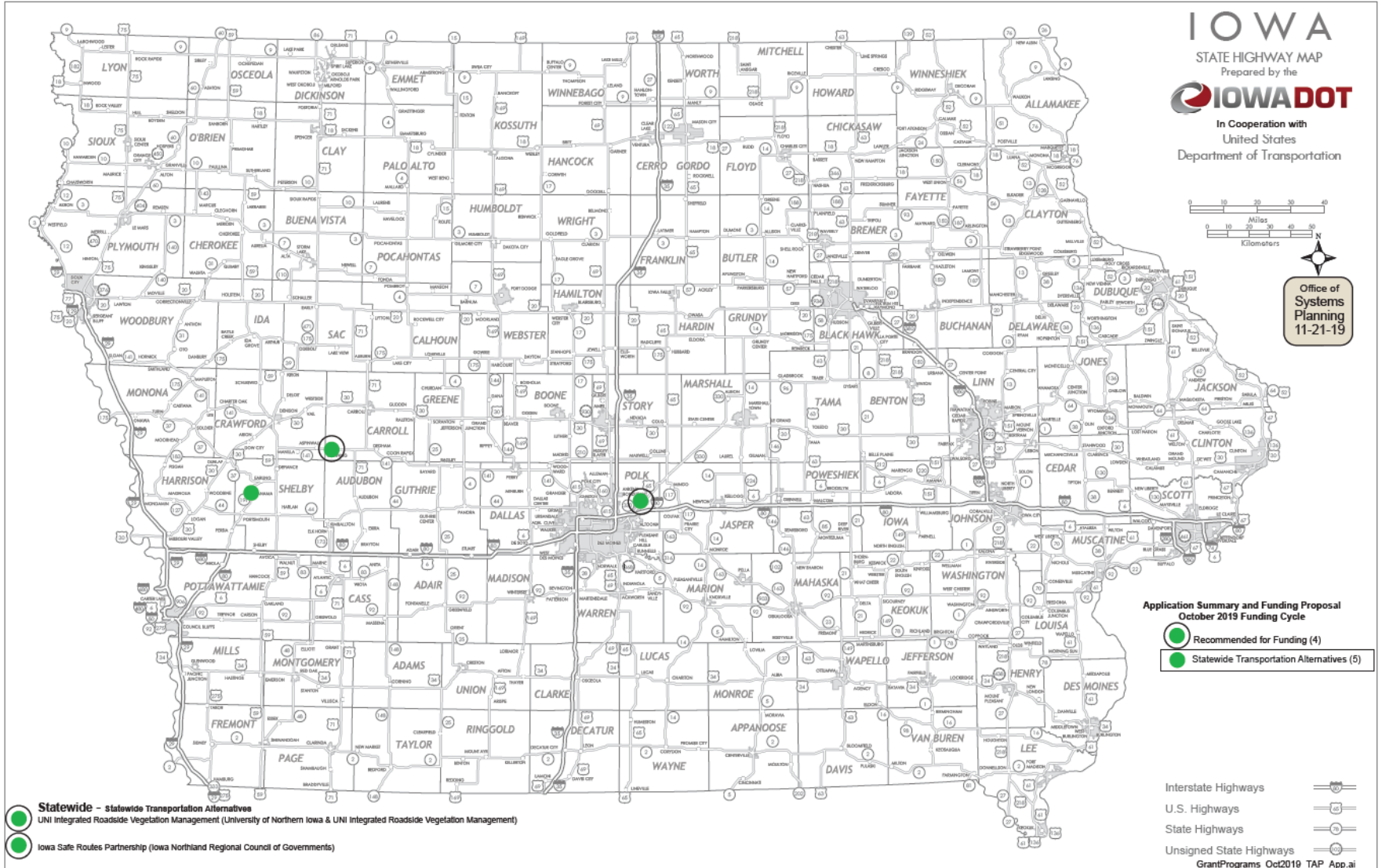
Available Funding and Application Summary

- **Available Funding:**
 - Statewide Iowa's TAP funds available: \$1,000,000 plus previous years under runs
- **Application Summary**
 - Total number of projects: 5
 - Total project costs: \$4,677,706
 - Total amount requested: \$1,721,055

List of Applications Recommended

PROJECT NAME	SPONSOR	SCORE	TOTAL PROJECT COST	REQUESTED AMOUNT (% of Total Project Cost)	RECOMMENDED AMOUNT (% of Total Project Cost)
<u>US 65 Underpass</u>	Bondurant	90	\$2,679,574	\$536,000 (20%)	\$536,000 (20%)
<u>UNI Integrated Roadside Vegetation Management</u>	University of Northern Iowa/Tallgrass Prairie Center	90	\$1,077,651	\$541,400 (50.24%)	\$541,400 (50.24%)
<u>Iowa Safe Routes to School Partnership</u>	Iowa Northland Regional Council of Governments	85	\$264,728	\$201,055 (75.95%)	\$201,055 (75.95%)
<u>Manning Safe Routes to School – South Phase I</u>	Manning	20	\$164,000	\$49,200 (30%)	\$49,200 (30%)

Map of Applications Received





QUESTIONS?



Pamella Lee
Transportation Alternatives program manager
Pamella.lee@iowadot.us

US 65 Underpass (Bondurant)

Construction of an underpass under US65 to allow safe passage of pedestrians across this busy highway.

Total Cost: \$2,679,574

Requested: \$536,000 (20%)



UNI Integrated Roadside Vegetation Management (University of Northern Iowa/Tallgrass Prairie Center)

Native grass and wildflower seed are to be planted in county road or city (population >10,000) rights-of-way. This allows counties and cities that apply Integrated Roadside Vegetation Management to more cost effectively establish native roadside vegetation for habitat, biodiversity, erosion control and improved hydrology across Iowa's landscape.



Total Cost: \$1,077,651
Requested: \$ 541,400 (50.24%)

Iowa Safe Routes to School Partnership (Iowa Northland Regional Council of Governments and Upper Explorerland Regional Planning Commission)

A comprehensive program that provides support to communities by implementing SRTS initiatives, including pedestrian and bicycle safety education through encouragement activities both inside and outside the classroom.

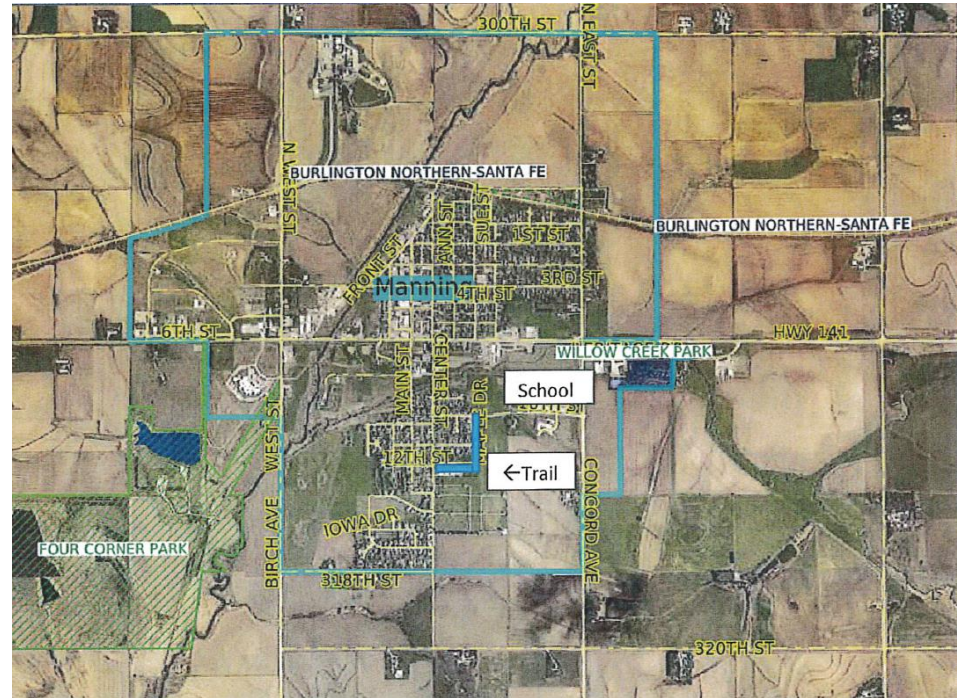
Total Cost: \$264,728
Requested: \$201,055 (80%)



Safe Routes to School – South Phase I (Manning)

Construct a 1,500 ft. paved trail from the existing School Trail South to Manning neighborhoods.

Total Cost: \$164,000
Requested: \$ 49,200 (20.00%)



List of Applications Not Recommended for Award

PROJECT NAME	SPONSOR	SCORE	TOTAL PROJECT COST	REQUESTED AMOUNT (% of Total Project Cost)	RECOMMENDED AMOUNT (% of Total Project Cost)
Shelby County Phase 1 Ballpark to Ballpark	Shelby County	Not Eligible	\$491,750	\$393,400 (80%)	\$0